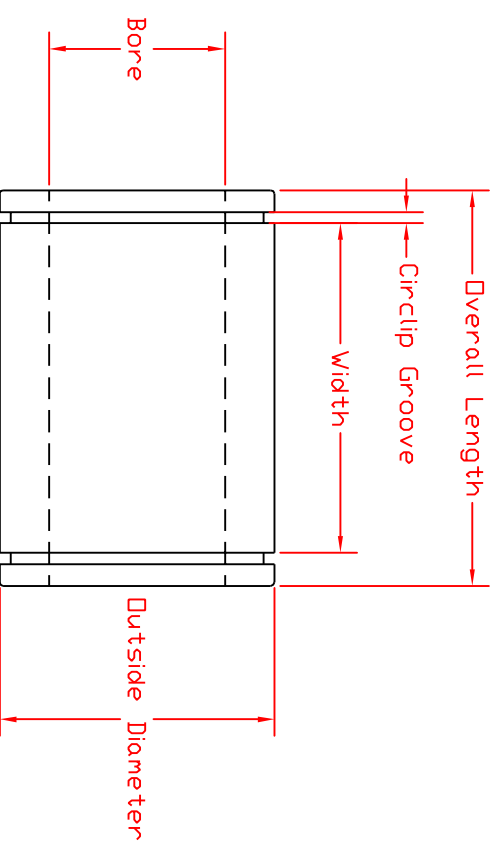


Bore	Outside Diameter	Overall Length	Circlip Groove	Width
8	15	24	1.1	15.2
12mm	21	30	1.3	20.3
16mm	28	37	1.6	23.3
20mm	32	42	1.6	27.3
25mm	40	59	1.85	37.3
30mm	45	64	1.85	40.3
40mm	60	80	2.1	56.3
50mm	80	100	2.6	68.3

ALL DIMENSIONS IN MILLIMETRE

NO WARRANTY THAT THESE DRAWINGS ARE CORRECT IS EXPRESSED OR IMPLIED.



12 May 2005

www.CNCDirect.co.za

LINEAR BEARING